

Up or Down 65



The PURALUCE UP or DOWN 65 wall mounted LED luminaire is constructed of solid brass. There are four standard finishes and two beam distributions of 20, 30 and 50 degrees. Available in color temperatures 2700K, 3000K and 4000K. The Up or Down 65 operates on 24VDC or 350mA constant current. Choose whichever orientation you prefer for uplighting or downlighting architectural elements.

Standard Finishes

Body

- white
- grey
- ever-bright brass
- natural copper
- ever-bright copper



White



Grey



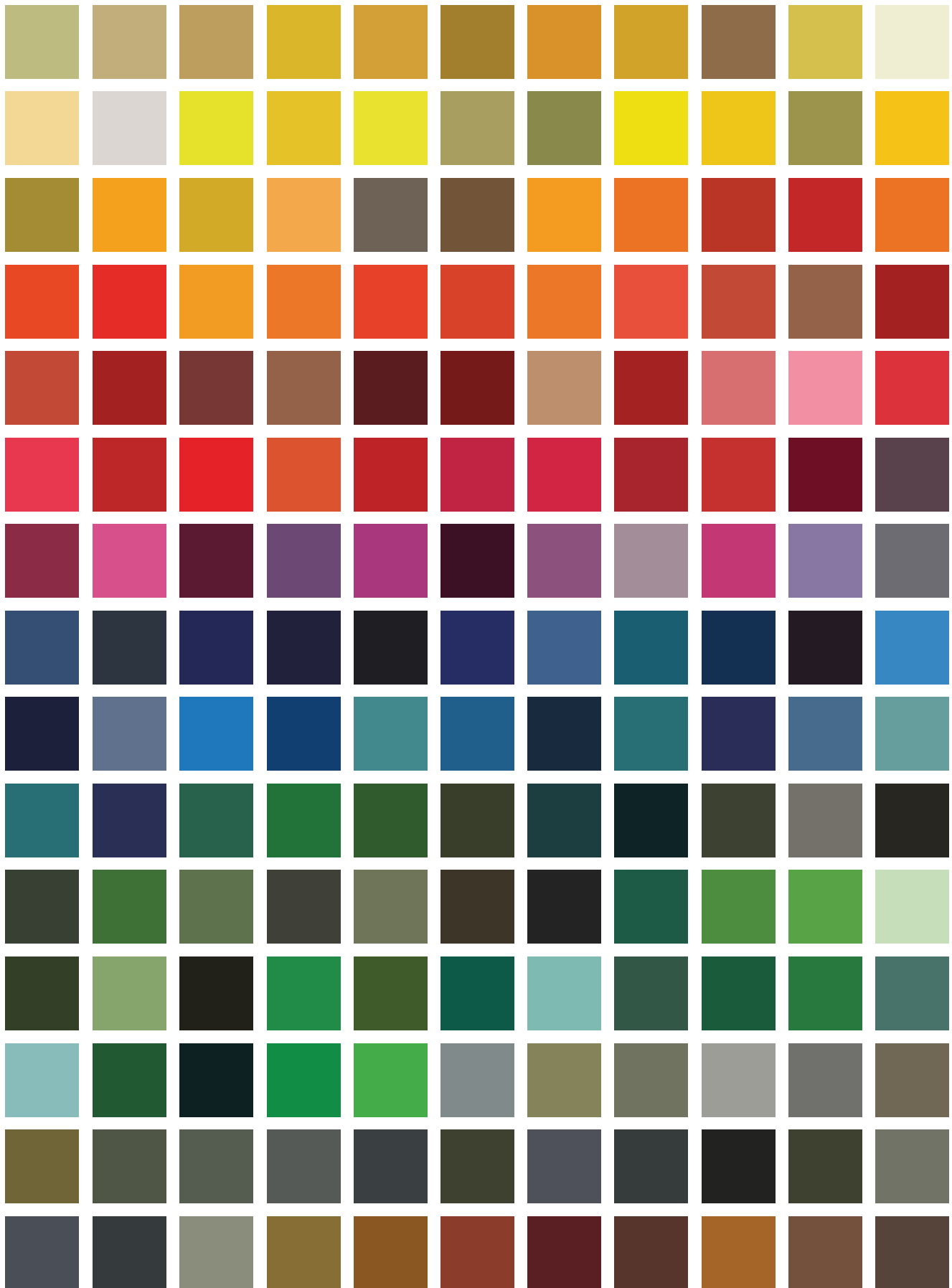
Ever-bright Brass



Natural Copper

JOB:	TYPE:	QUANTITY:
------	-------	-----------

NOTES:



Some custom color options. Fixtures can be customized to any RAL color.

Technical Data

Current

350mA (when using CC)*

Voltage

17V (when using CC)*

24VDC

Wattage

8W

Color Temperatures

2700°K (WW), 3000°K (W), 4000°K (N)

2 step MacAdam ellipse binning

CRI / R9

92 / 84

Lumens

832lm (WW) 885lm (W) 976lm (N)

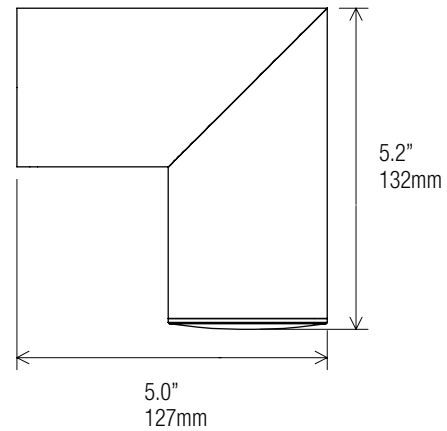
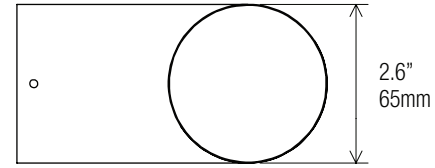
Optic

20°, 30°, 50°

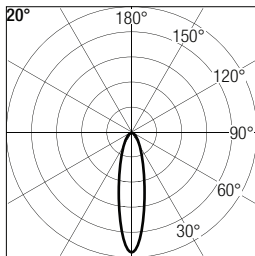
*using CC option will allow for the best dimming performance, 1% (phase), 0.1% (0-10V)



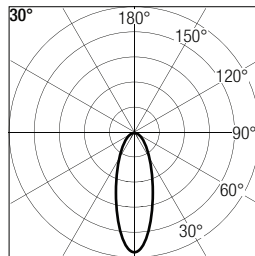
Dimensions



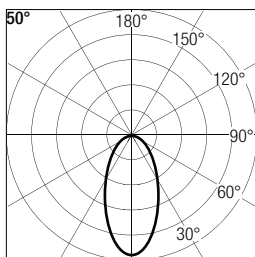
Photometric data



h (m)	E (lx)	D (cm)
1	2529	28
1,5	1044	42
2	567	56
2,5	355	70
3	243	85

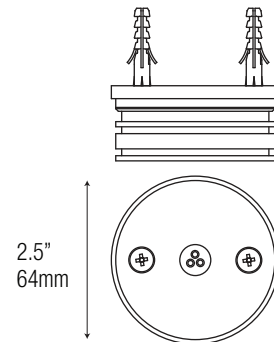


h (m)	E (lx)	D (cm)
1	1752	46
1,5	720	69
2	389	92
2,5	244	115
3	168	138

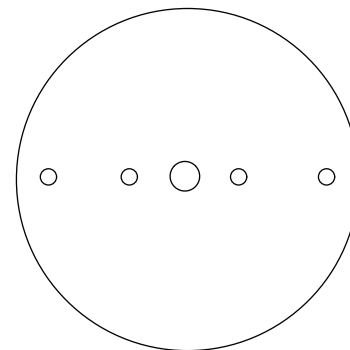


h (m)	E (lx)	D (cm)
1	1428	82
1,5	585	124
2	317	165
2,5	198	207
3	135	248

Mounting



mounting bracket



J-box plate (optional)

Order Code

Code	Wattage	Power In	CRI & CCT	Optic	Body Finish	Plate Finish (optional)
UoD65	- 8W	-	-	-	-	-
		24VDC = 24VDC 350MA = 350mA	927 = 90 CRI, 2700°K 930 = 90 CRI, 3000°K 940 = 90 CRI, 4000°K	20 = 20° 30 = 30° 50 = 50°	WH = White GY = Grey CT = Ever-bright Brass NC = Natural Copper XX = Custom	WH = White GY = Grey CT = Ever-bright Brass NC = Natural Copper XX = Custom

Eg. UoD65-8W-24VDC-930-20-CT-CT

Drivers - Constant Current 350mA

Phase/0-10V Dimmable

DR-30W350MA-DIML-UNV - 3 pieces

Drivers - 24VDC

Non-dimmable

DR-30W24VDC-OUT - 1 to 3 pieces

Phase/0-10V Dimmable

DR-60W24VDC-DIMS-UNV - 1 to 6 pieces