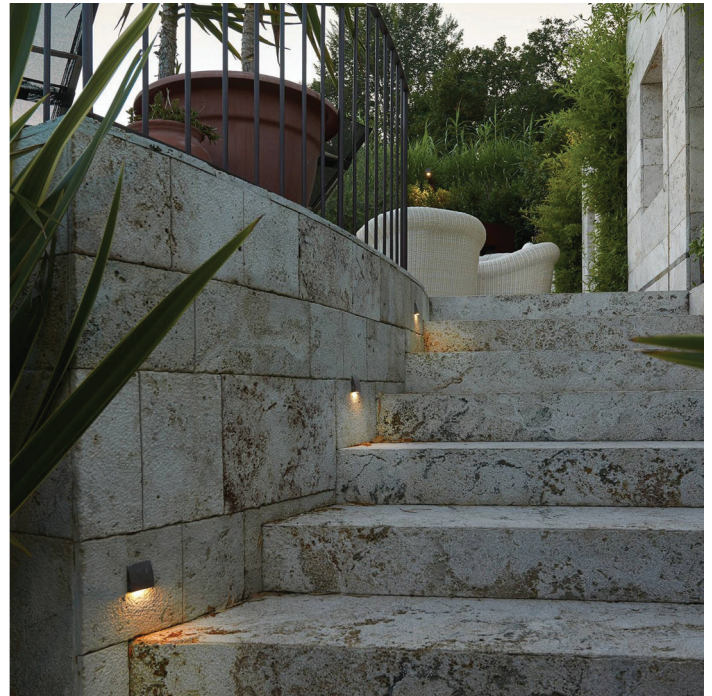


Step



The STEP is a miniature die-cast discrete architectural accent light, STEP provides soft, even illumination for stairs, theater seating aisles and corridors. It can also be applied as a simple walkway marker light. With a CRI of 93 and an R9 value of 82, these LED sources provide exceptional color rendering. The color consistency is further ensured by 2-step MacAdam ellipse binning. Durable die-cast construction allows this product to be used in both interior and exterior IP65 applications. STEP is available in 6 standard finishes with the option to create a one-of-a-kind lighting element with a custom painted color. The classic Italian design of STEP combined with modern LED technology provides illumination and architectural integrity to any project.

Standard Finishes

white painted
corten painted
shining palladium
golden palladium
natural copper
zinc



White



Corten Painted



Chrome



Gold Chrome



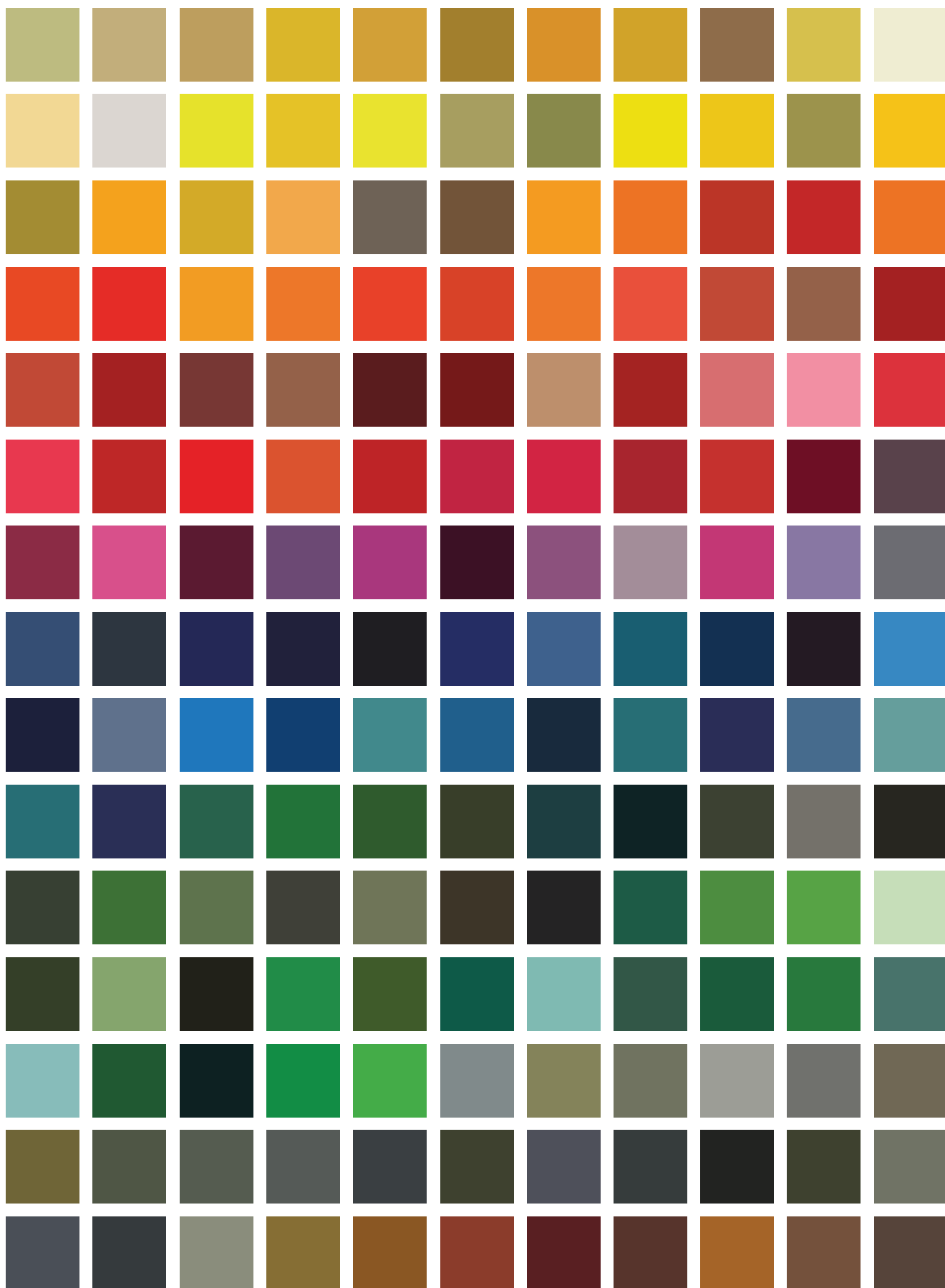
Natural Copper



Zinc

JOB:	TYPE:	QUANTITY:
------	-------	-----------

NOTES:



Some of your custom color options. Fixtures can be customized to any RAL color.

Technical Data

Input

24Vdc

Wattage

1.1W

Color Temperatures

2700°K (WW), 3000°K (W), 4000°K (N)

2 step MacAdam ellipse binning

CRI / R9

92 / 84

Lumens

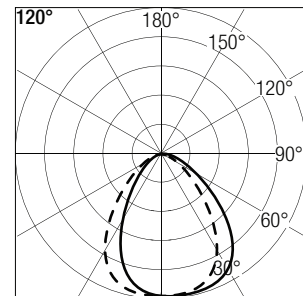
140 lm (WW) 150 lm (W) 170 lm (N)

Optic

120°

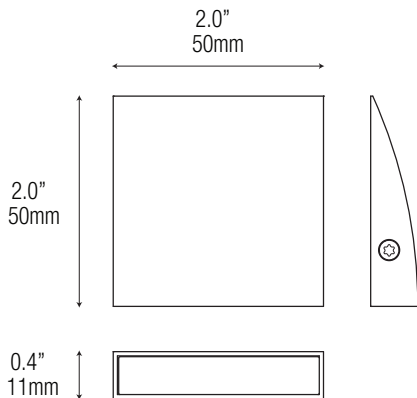


Photometric data

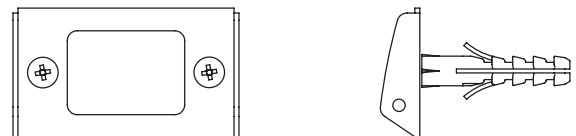


R (m)	E (lx)
0,10	470
0,20	133
0,30	57
0,40	32
0,50	15

Dimensions



Mounting



Order Code:

Code Wattage Voltage CRI & CCT Finish
STP - 1W - 24VDC - -

927 = 90 CRI, 2700°K

930 = 90 CRI, 3000°K

940 = 90 CRI, 4000°K

WH = White

CT = Corten

CH = Chrome

GC = Gold Chrome

NC = Natural Copper

ZN = Zinc

XX = Custom

Drivers

Non-dimmable

DR-30W24VDC-OUT - up to 25 pieces

Phase Dimmable

DR-24W24VDC-DIMA - up to 20 pieces

Universal Phase / 0-10V Dimmable

DR-30W24VDC-DIMS-UNV - up to 25 pieces