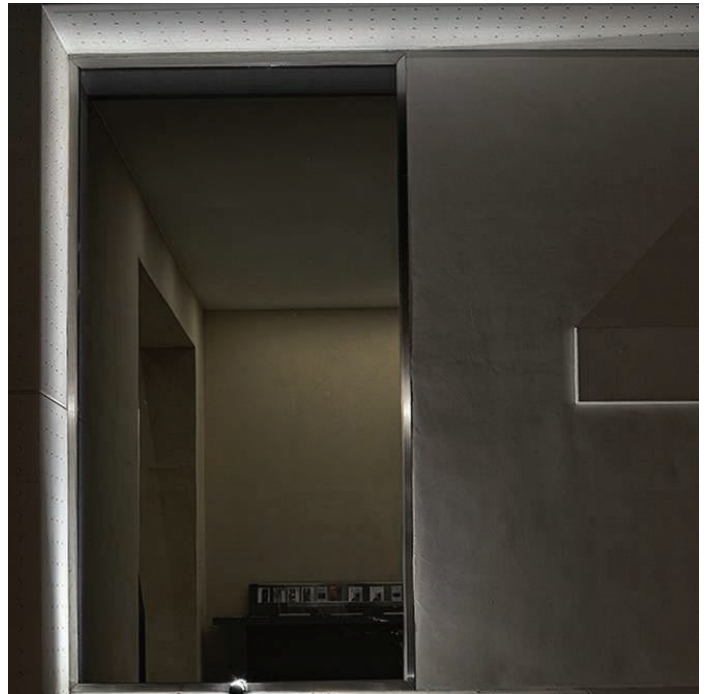


Arco 180



The PURALUCE ARCO 180 facade light is constructed of machined aluminum with a lens turned from clear PMMA monobloc 8x180°. The color consistency is further ensured by 2-step MacAdam ellipse binning. Finely detailed construction allows this product to be used in a variety of indoor or outdoor applications. ARCO 180 is available in 2 standard finishes or any RAL painted finish with the option to create a one-of-a-kind lighting element with a custom painted color. The classic Italian design of ARCO 180 combined with modern LED technology provides illumination and architectural integrity to any project.

Standard Finishes

Body

silver anodized aluminum
black anodized aluminum
custom RAL painted



Silver Anodized Aluminum

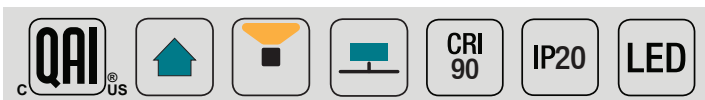


Black Anodized Aluminum

JOB:	TYPE:	QUANTITY:
------	-------	-----------

NOTES:

Technical Data



Input

500mA - Constant Current

Wattage

6W

Color Temperatures

2700°K (WW), 3000°K (W), 4000°K (N)

2 step MacAdam ellipse binning

CRI / R9

92 / 84

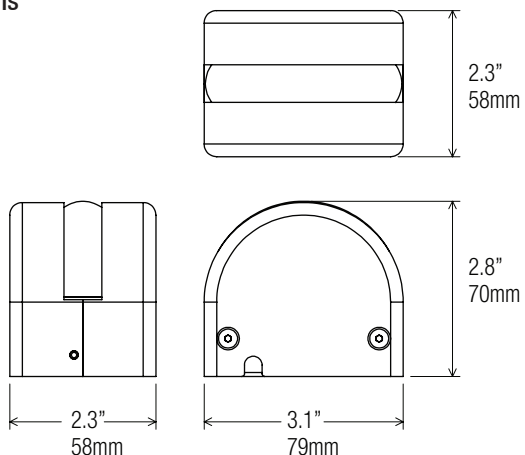
Lumens

540 lm (W)

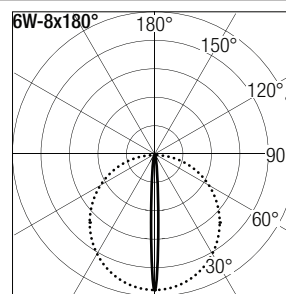
Optic

8x 180° oval

Dimensions



Photometric data



h (m)	E (lx)	D (m)
1	~397	17
1,5	175	26
2	98	35
2,5	63	44
3	44	53

Order Code

Code Wattage Power Dimming CRI & CCT Body Finish

ARC - 180 - 6W - 500mA - - -

TE = TRIAC/ELV
0-10 = 0-10V

927 = 90 CRI, 2700°K
930 = 90 CRI, 3000°K
940 = 90 CRI, 4000°K

SAA = Silver Anodized Aluminum
BAA = Black Anodized Aluminum
XX = Custom

Eg. ARC-180-6W-500mA-0-10-930-BAA