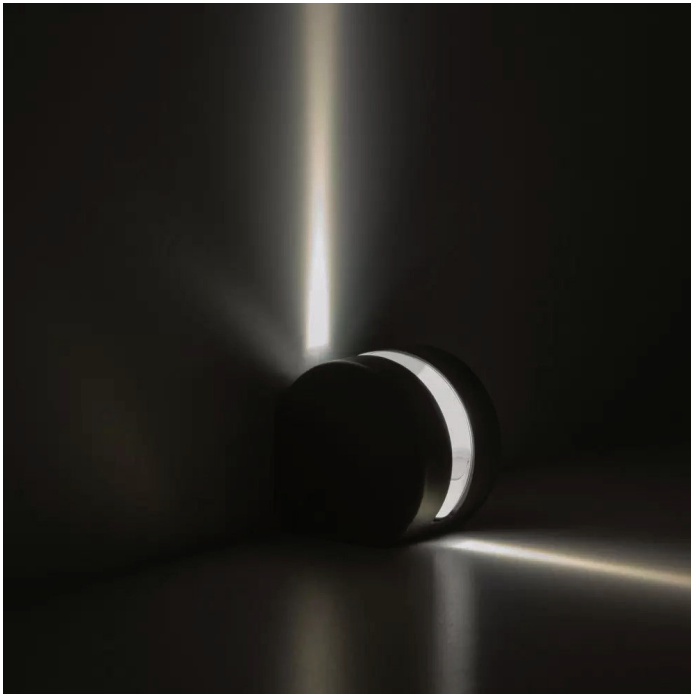


Arco 90



The PURALUCE ARCO 90 facade light is constructed of machined aluminum with a lens turned from clear PMMA monobloc 8x90°. The color consistency is further ensured by 2-step MacAdam ellipse binning. Finely detailed construction allows this product to be used in a variety of indoor or outdoor applications. ARCO 90 is available in 2 standard finishes or any RAL painted finish with the option to create a one-of-a-kind lighting element with a custom painted color. The classic Italian design of ARCO 90 combined with modern LED technology provides illumination and architectural integrity to any project.

Standard Finishes

Body

silver anodized aluminum
black anodized aluminum
custom RAL painted



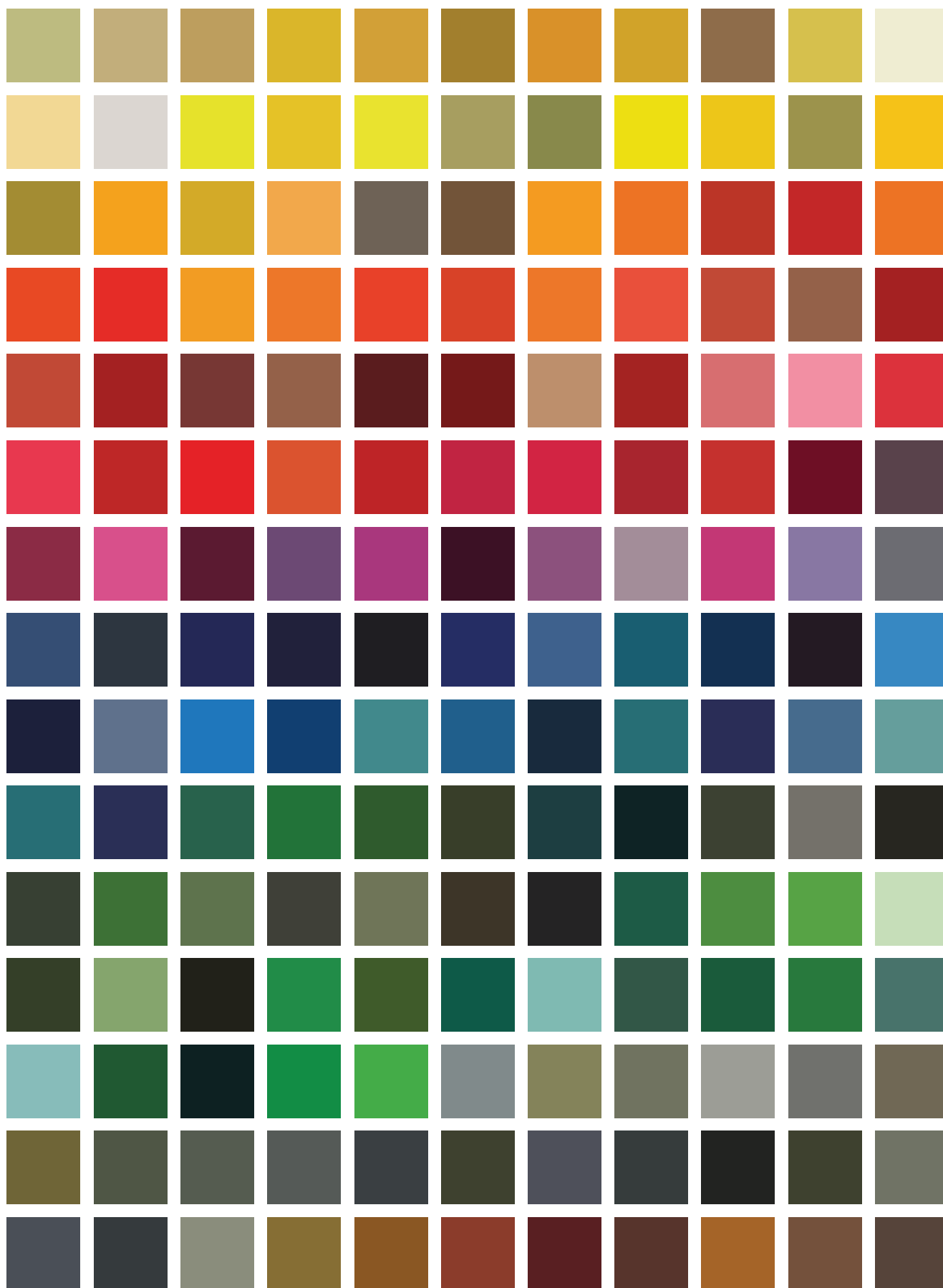
Silver Anodized Aluminum



Black Anodized Aluminum

JOB:	TYPE:	QUANTITY:
------	-------	-----------

NOTES:



Some custom color options. Fixtures can be customized to any RAL color.

Technical Data



Input

500mA - Constant Current

Wattage

6W

Color Temperatures

2700°K (WW), 3000°K (W), 4000°K (N)

2 step MacAdam ellipse binning

CRI / R9

92 / 84

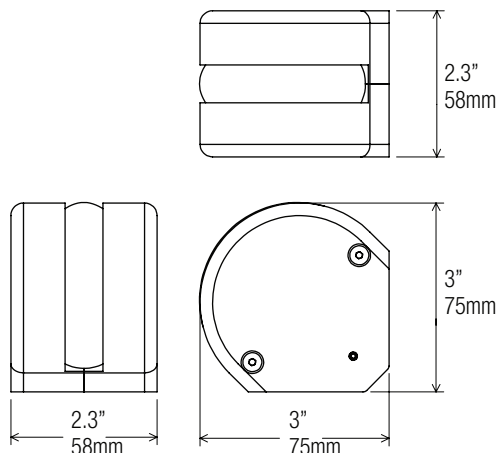
Lumens

540 lm (W)

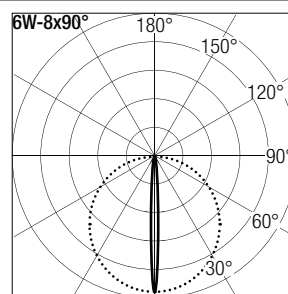
Optic

8x 90° oval

Dimensions



Photometric data



h (m)	E (lx)	D (m)
1	397	17
1,5	175	26
2	98	35
2,5	63	44
3	44	53

Order Code

Code	Wattage	Power	CRI & CCT	Body Finish
ARC - 90 -	6W -	500mA -		

927 = 90 CRI, 2700°K **SAA** = Silver Anodized Aluminum
930 = 90 CRI, 3000°K **BAA** = Black Anodized Aluminum
940 = 90 CRI, 4000°K **XX** = Custom

Eg. ARC-90-6W-500mA-930-BAA