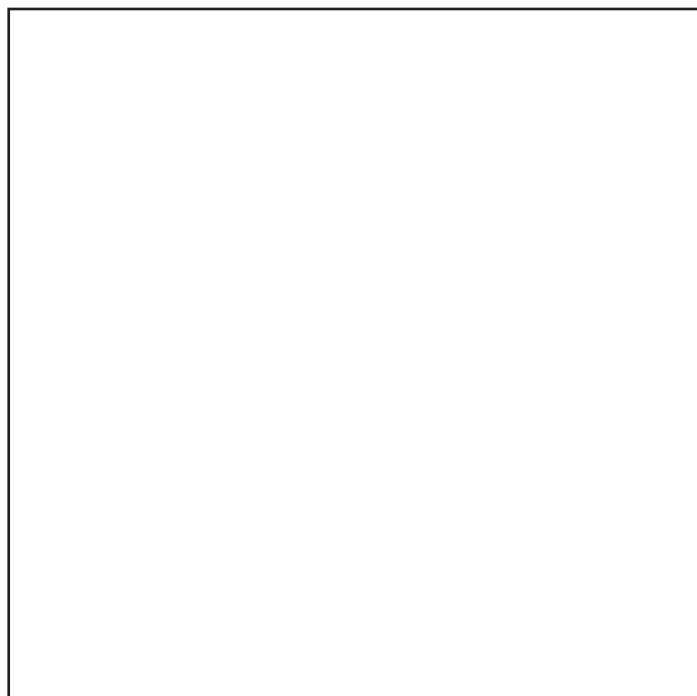
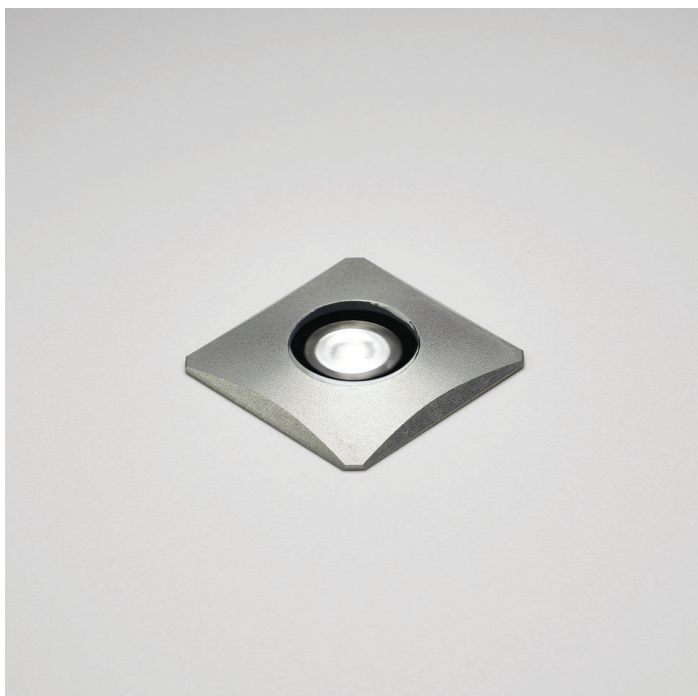


Mini R



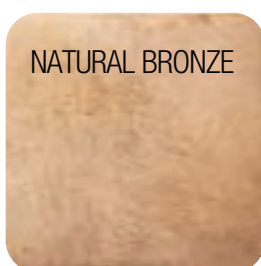
The PURALUCE MINI R light is constructed of machined aluminum with tempered glass lens. The color consistency is further ensured by 2-step MacAdam ellipse binning. Finely detailed construction allows this product to be used in a variety of indoor or outdoor applications. MINI R is available in standard finishes or any RAL painted finish with the option to create a one-of-a-kind lighting element with a custom painted color. The classic Italian design of MINI R combined with modern LED technology provides illumination and architectural integrity to any project.

Standard Finishes

stainless steel
natural bronze



SATIN STAINLESS
STEEL



NATURAL BRONZE

| | | |
|------|-------|-----------|
| JOB: | TYPE: | QUANTITY: |
|------|-------|-----------|

NOTES:

Technical Data

Input

350mA

Wattage

1.2W

Color Temperatures

2700°K (WW), 3000°K (W), 4000°K (N)

2 step MacAdam ellipse binning

CRI / R9

92 / 84

Lumens

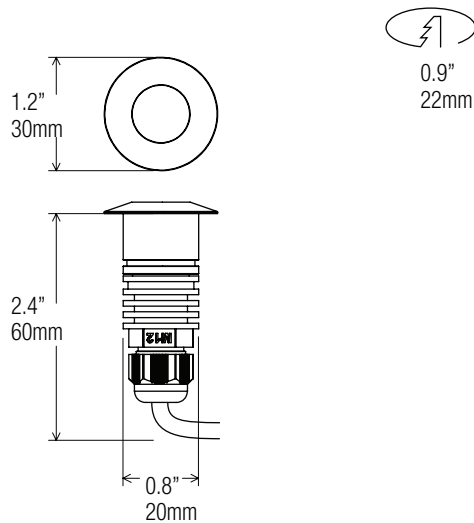
150 lm (W)

Optic

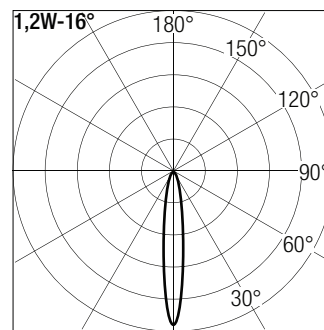
16°, 90°



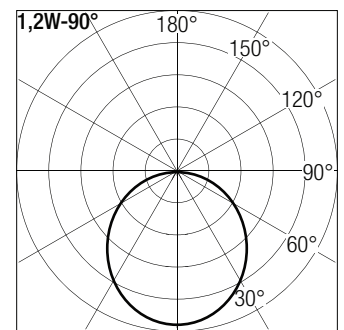
Dimensions



Photometric data



| h (m) | E (lx) | D (cm) |
|-------|--------|--------|
| 1 | 1015 | 28 |
| 1,5 | 450 | 54 |
| 2 | 254 | 82 |
| 2,5 | 160 | 107 |
| 3 | 98 | 159 |



| h (m) | E (lx) | D (cm) |
|-------|--------|--------|
| 1 | 338 | 200 |
| 1,5 | 131 | 300 |
| 2 | 106 | 400 |
| 2,5 | 67 | 500 |
| 3 | 48 | 600 |

Order Code

| Code | Wattage | Power | Dimming | CRI & CCT | Optics | Body Finish |
|-------|---------|---------|---------|-----------|--------|-------------|
| MNR - | 1W - | 350MA - | UNV - | - | - | - |

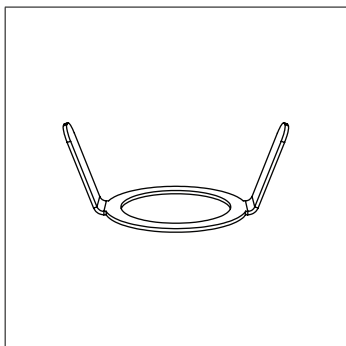
927 = 90 CRI, 2700°K
930 = 90 CRI, 3000°K
940 = 90 CRI, 4000°K

16 = 16° - narrow spot
90 = 90° - spot

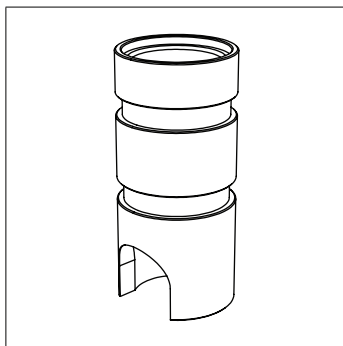
SS = Stainless Steel
NB = Natural Bronze
XX = Custom

Eg. MNR-1W-350MA-UNV-930-36-SS

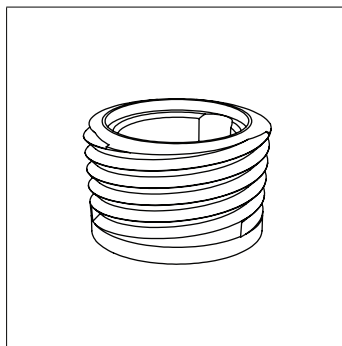
Accessori | Accessories



Spring for panel.
(20x31x12mm)



Recessed Box (type 1).
(Ø28mm H.60mm)



Plasterboard recessed box (type 2).
(Ø32mm H.20mm)